



NLP for Social Good: Contrasting
Approaches to Text Classification



Anna Bethke
Data Science Fellow & Project Lead
Delta Analytics

anna.bethke@intel.com
twitter: @data_beth



Sean McPherson
Data Science Fellow & Project Lead
Delta Analytics

sean@deltanalytics.org
twitter: @PhaseAnalytics

Agenda

- Intro Delta Analytics
- Teaching Machine Learning for Social Good
- Open Media Foundation
- Career Village
- Approaches to Text Classification



Who We Are

Delta Analytics is...

An organization...

- Founded in 2013
- Based in SF Bay Area
- Dedicated to using Data for Change

A community of...

Professionals in

- Analytics
- Data Science
- Design
- Marketing

working across a wide variety of industries.

Who are...

Passionate about volunteering their skills to close the skill gap in the social sector and drive meaningful, sustainable impact.

Through...

Two programs

1. Providing pro-bono data consulting services to nonprofits.
2. Developing and teaching a machine learning curriculum to cultivate local capacity.

Since 2013...



Completed **29 projects** with nonprofits and social impact organizations



Beta tested an **open source curriculum** with **30 students** in Nairobi, Kenya



Recruited **70+ professionals** who have volunteered thousands of hours consulting and developing data for good resources



Donated over **15,000 hours**



\$0 charged for services

Where our Fellows Work





Our Programs

Delta Analytics runs two core programs



Data Service Grant

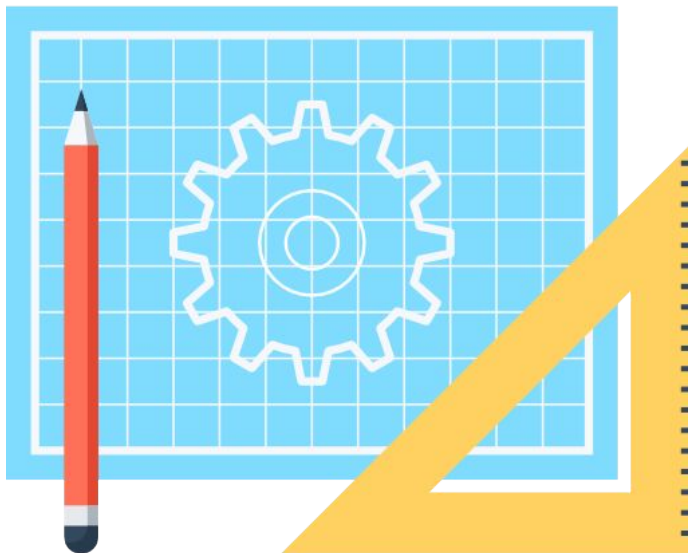
Bridging the nonprofit skill gap by enabling nonprofits to **accelerate their impact** through leveraging **skilled data professionals** on project opportunities.



Machine Learning for Good

Empower anyone, anywhere to leverage data for good in their communities by **building technical capacity** around the world.

Data Service Grant



- Closing the skill gap through connecting nonprofits with skilled professionals on data projects
- 6 month service grants to 5-10 nonprofit organizations per year
- Each project is staffed with 3-5 data professionals
- Fellowship Program offers volunteers community and professional development

Data Service Grant - Types of Projects



Analytics

Problem Type

- Operational analytics
- Impact evaluation

Deliverable

- Dashboard
- Report

Case Study



Data Science

- Predictive application

- Models
- Software Infrastructure



Data Tools

- Improve existing data processes

- Deployed tool
- Potentially open source

TBD

Data Service Grant - Past Recipients



LIVELYHOODS



KUOW.ORG



Data Service Grant - Current Projects



MEDIC MOBILE



one degree



TECHNOSERVE
BUSINESS SOLUTIONS TO POVERTY



Farmerline



MindRight



Machine Learning for Good

Why Machine Learning for Good?

1) Machine learning is an incredibly powerful tool

Like all powerful tools machine learning requires **responsibility & accountability**

We believe the face of data science has to be **more representative** of the world it serves

2) Delta has been working for the last 3 years to help non-profits around the world

Our **non-profit grant recipient program is small** and selective. We only work with 7-10 nonprofit grant recipients every year

There is an incredible amount of **unmet demand**. We cannot help all the non-profits and communities that reach out to us for help

Open Source Curriculum

DeltaAnalytics / [intro_course_data_science_for_good](#) Unwatch 10 ★ Star 5 🍴 Fork 2

<> Code ⓘ Issues 1 🔄 Pull requests 0 📁 Projects 1 📖 Wiki 📊 Insights ⚙️ Settings

<http://www.deltanalytics.org/> Edit

[data-science](#) [data-analysis](#) [data-mining](#) [non-profit](#) [python](#) [python3](#) [data-visualisation](#) [Manage topics](#)

📄 357 commits 🌿 9 branches 📦 2 releases 👤 11 contributors 📄 CC-BY-4.0

Branch: master New pull request Create new file Upload files Find file Clone or download

brianspieling Fix broken image links Latest commit 11f3782 10 days ago

📁 .circleci	Make CI work with these changes	24 days ago
📁 module_0_introduction	Make CI work with these changes	24 days ago
📁 module_1_descriptive_statistics	Fix spelling + grammar	10 days ago
📁 module_2_feature_engineering	fix spelling + grammar	17 days ago
📁 module_3_linear_regression	Fix spelling + grammar	10 days ago
📁 module_4_decision_trees	Fix spelling + grammar	10 days ago
📁 module_5_unsupervised_learning	Fix broken image links	10 days ago
📄 .gitattributes	Add hidden files	29 days ago
📄 .gitignore	Add spell checking to markdown cells	24 days ago
📄 LICENSE	Strip nb output and CI integration	29 days ago

Open source curriculum
developed to train students
with beginner coding
proficiency

Our code is **Publically Available**
and **Open Source**

Help us spread the word! bit.ly/social-good-ml

INTRO - DELTA

ML for Social Good

OMF

Career Village

Text Classification

Open Source Curriculum

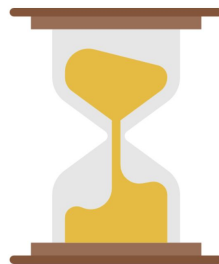
All our curriculum is **public**. We welcome **comments** and have **more than 300 remote teachers** from all over the world.

You covered this today:

- ✓ What is machine learning?
- ✓ How do you define a research question?
- ✓ What are observations?
- ✓ What are features?
- ✓ What are outcome variables?
- ✓ Introduction to KIVA data



If we have observations over time, we need to do time series validation.



Ask yourself:

- Is the data for the correct time range?
- Are there unusual spikes in the data over time?

What should we do if there are unusual spikes in the data over time?



Link to all slides here: <http://www.deltanalytics.org/curriculum.html>

INTRO - DELTA

ML for Social Good

OMF

Career Village

Text Classification

Machine Learning for Good - Kenya Pilot



- Partnered with Moringa School in Nairobi, Kenya for a **30 student pilot**



- We taught a night class from 6:00 pm to 9:00pm 2x a week. We had work sessions every Saturday.
- Many of our students travelled for **more than an hour after work to attend class.**

Machine Learning for Good - Morocco

In the next few months we will teach classes in Morocco and in the local bay area near San Francisco.



[INTRO - DELTA](#)

[ML for Social Good](#)

[OMF](#)

[Career Village](#)

[Text Classification](#)



Open Media Foundation

Delta Team



Anna Bethke
Head of AI4Good
Intel Corporation

Zong Huang
Research Analyst
The Brattle Group

Graham McAlister
Data Scientist
Esurance

Sydney Wong
Antitrust and Competition
Economics
Charles River Associates

Putting the power of the media and technology in the hands of the people.



SERVICES

We help socially-conscious organizations use the power of media to carry out their mission and vision.

[Start a Project](#)



EDUCATION

We offer a variety of classes to help you create your own media and make it more effective.

[Take a Class](#)



TOOLS

We provide access to state-of-the-art media tools and high-end technology resources at affordable rates.

[Rent Equipment/Studios](#)

[INTRO - DELTA](#)

[ML for Social Good](#)

[OMF](#)

[Career Village](#)

[Text Classification](#)

Open Media Project 0.2.2

[Base url: open.ompnetwork.org/api]
<https://raw.githubusercontent.com/omfound/ompgov-api/master/ompgov-api-0.2.2-swagger.yaml>

OMP BETA API documentation for accessing government meeting data (city councils, state legislature, school boards) using the Open Media Project (OMP). You can learn more about the OMP at <http://www.ompnetwork.org>. Authentication is not currently required but an API key will be required in the future.

[Contact the developer](#)

Schemes

HTTPS ▾

session Government meeting sessions ▾

- GET /sessions Fetches sessions
- GET /sessions/{sessionId} Find session by ID

Enhancing Meeting Transparency

Create an automatic tagging system to enable:

- Easier searching
- Insight into key discussions
- Analysis and tracking of discussions



Career Village

Delta Team



Stephen Hsu
Data Science Student
University of San Francisco

Sean McPherson
Data Scientist
Phase Analytics

Seema Misha
Data Analyst
Varian Medical

Yiquin Yang
Data Science Student
University of California,
Davis



- 1 CareerVillage.org crowdsources answers to career questions posed by underserved youth. The key factor that matches volunteers to questions to answer **is** which tags are applied to the question. The goal of our project **is** to improve the precision **and** recall of the system that matches tags to questions.

How do I get started in the field of data science/big data/machine learning?

Title

I'm a third year computer science major, and I've been trying to learn more about data science/big data/machine learning. There aren't any classes offered at the college that I'm attending that cover these topics, and I'm a little lost as to how I would get started in any of these fields. What are some resources that I could use to learn more about these fields and get a taste of what they're like? Any help would be appreciated.

Text

[#computer-software](#) [#data-science](#) [#data-analysis](#) [#big-data](#) [#machine-learning](#)
[#software-engineering](#) [#engineering](#) [#analytics](#) [#computer-engineering](#)



Tags



Topics I follow

[#United States of America](#) [#phd](#) [#signal-processing](#) [#electrical-engineering](#) [#data-visualization](#) [#data-science](#)



Albert P.

Student | Los Angeles, California | 1841 Karma | 25 Questions

You are both in [California](#).

INTRO - DELTA

ML for Social Good

OMF

Career Village

Text Classification



How do I get started in the field of data science/big data/machine learning?

I'm a third year computer science major, and I've been trying to learn more about data science/big data/machine learning. There aren't any classes offered at the college that I'm attending that cover these topics, and I'm a little lost as to how I would get started in any of these fields. What are some resources that I could use to learn more about these fields and get a taste of what they're like? Any help would be appreciated.

[#computer-software](#) [#data-science](#) [#data-analysis](#) [#big-data](#) [#machine-learning](#)
[#software-engineering](#) [#engineering](#) [#analytics](#) [#computer-engineering](#)



Albert P.

Student | Los Angeles, California | 1841 Karma | 25 Questions

You are both in [California](#).

Which came first, the PhD or the PhD advisor?

[#college-major](#) [#professor](#) [#phd](#) [#science-phd](#)

Prediction

fast Text

Training

`__label__appreciatedcomputer-software __label__data-science __label__data-analysis __label__big-data
__label__machine-learning __label__software-engineering __label__engineering __label__analytics __lab
el__computer-engineering how do i get start in the field of data science big data machine learn i m a
third year computer science major and i ve be try to learn more about data science big data machine
learn there aren t any class offer at the college that i m attend that cover these topic and i m a li
ttle lose a to how i would get start in any of these field what be some resource that i could use to
learn more about these field and get a taste of what they re like any help would be`



OPEN MEDIA
F O U N D A T I O N



CareerVillage.org

Contrasting Approaches to Text Classification

Text Classification Approaches



OMF

Data cleaning

Removing “Fluff”

Unsupervised text clustering – LDA

Rule-based label algorithm

Aggregate labels to session level



Career Village

Data cleaning

Label cleaning

Supervised text recommendation

Data augmentation

Real-time text recommendation

Necessary

- Lowercase

Potentially Helpful

- Remove stopwords
 - The, and, a, etc.
- Remove non-letters
 - Numbers, characters, etc
- Lemmatization

Our Current Python Packages

- nltk
- spacy
- re
- gensim
- sklearn
- pandas
- numpy
- matplotlib

Removing the “Fluff”

- Noticed that there were several LDA labels that were too “fluffy” - parliamentary proceedings, people thanking/welcoming each other, etc
- We hand-labeled 10,000 captions as fluff or not fluff
- Then used the best (most predictive) labels to remove as much fluff from our data as possible

```
In [*]: generate_labels(df, 100)
```

```
2 / 100
```

```
reason we took this on other than a have really needed to be done as we have found in many he  
arings over the years together about as that and it probably should is is i really wanted it  
to be
```

```
Fluff? 1
```

```
In [7]: # 1 is fluff (so meeting aspects w/o a clear topic)  
        # 0 is not fluff  
        # s is spanish  
        # 42 is unknown
```


Did removing fluff improve the results?

Some! It will likely be an iterative approach

- Topics are less fluffy
- Helped determine additional stopwords to remove
- Lot of “zoning” topics
- Some topics have more than one focus still

Problem: Over 8000 labels!

- Fix slight variations - major vs majors
- Ignore irrelevant labels (details later)

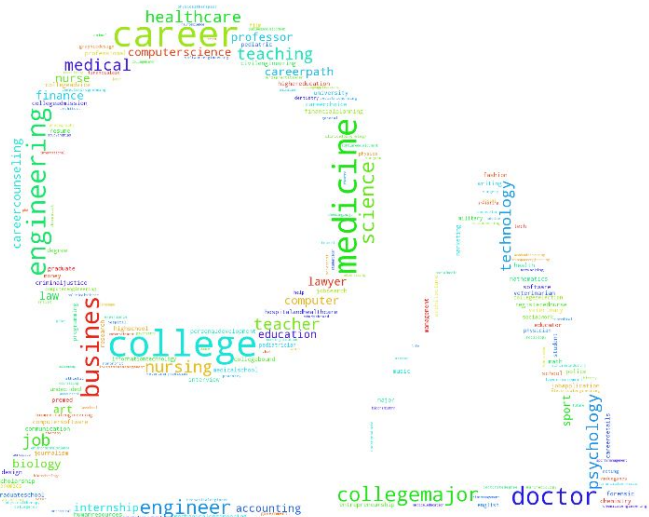
Problem: ~5% of examples without labels

- Pseudo labeling

Train Model -> Generate Rec labels -> Retrain model w/ additional examples

Problem: Poorly labeled training data

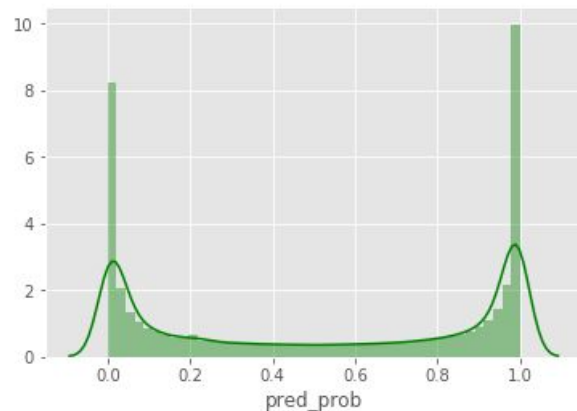
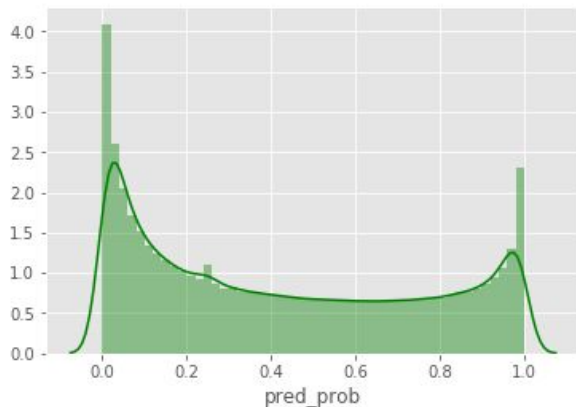
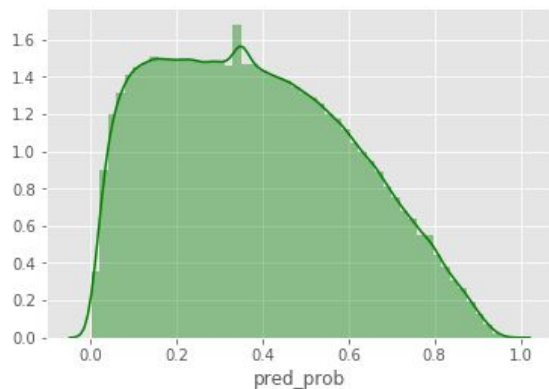
- Hand labeled “Gold” training set



I want become a data analyst ? which is suitable subjects i need to study

m 10th class student, guide me for career...

- What happens to the predictions as we train on more data?
 - First run: Train 8k, Validation 2k
 - Second run: Train 60k, Validation 5k
 - Third run: Train 220k, Validation 8k



Original Topic Top Words

10/20 informative labels

Topic #0: music license authority applause property one owner going dogs dog
Topic #1: traffic going bike road one street theres were streets highway
Topic #2: commission committee board going questions one want time meeting us
Topic #3: design code standards santa one rules were guidelines going theres
Topic #4: services health police community department human county officers also mental
Topic #5: years year one time months last ago two were going
Topic #6: plan urban process were renewal goals going one community plans
Topic #7: housing land development growth affordable units were need density eugene
Topic #8: county state city law federal government local states oregon lane
Topic #9: homeless health insurance one going were cities community theyre also
Topic #10: yeah want going go right were one say something little
Topic #11: water food force going were task trees theres one things
Topic #12: public hearing record speak questions hearings applicant comment city comments
Topic #13: school kids community one years day students city thornton children
Topic #14: dollars million percent money year thousand fund hundred budget tax
Topic #15: were things going us want community make way lot kind
Topic #16: you mayor that followed musica name good it want okay
Topic #17: motion second item vote council favor discussion move agenda meeting
Topic #18: property parking area building feet street site space south one
Topic #19: going session yeah meeting good one want time right last

New Topic Top Words

15/20 informative labels

Topic #0: rights food marijuana vested human city tobacco retail choose make
Topic #1: information community performance make way also public group going health
Topic #2: feet right yeah one foot acres road side square street
Topic #3: zoning property zone park neighborhood open space site properties one
Topic #4: school neighborhood food students business community make also businesses want
Topic #5: planning commission make zoning final decision plan zone review change
Topic #6: yeah fireworks id one make said want going good go
Topic #7: partnerships also city community park weve plan economic services partners
Topic #8: tax yeah way make go city going pay right fee
Topic #9: urban zoning zone growth land plan industrial boundary site residential
Topic #10: also windows lot one car camping city use traffic place
Topic #11: resolution item motion city calendar 2017 agreement agenda council approve
Topic #12: you followed next mayor claire okay vinis good alan here
Topic #13: fees waste fund water city impact funds fee one look
Topic #14: carbon services transportation impacts health also one treatment weve way
Topic #15: renewal urban district riverfront downtown chair city agency council vice
Topic #16: housing economic also public services development quiet airport county safety
Topic #17: code city application plan criteria zoning ordinance standards site section
Topic #18: dollars tax percent million hundred thousand sales ten six revenue
Topic #19: one day bus said make ago every also right go

Goal: **fast**, **simple to use**, **accurate** recommendation system

- FastText by Facebook

Problem: Small training set

- Pretrained word vectors

Constraint: Real-time model deployed using **AWS Lambda microservice**

- 50 to 250 MB limit on uploads!

*fast*Text



Adding A Rule Based Component

Problem: Some topics (like climate change) don't occur frequently enough to make their own automatic label, but are important and DO occur

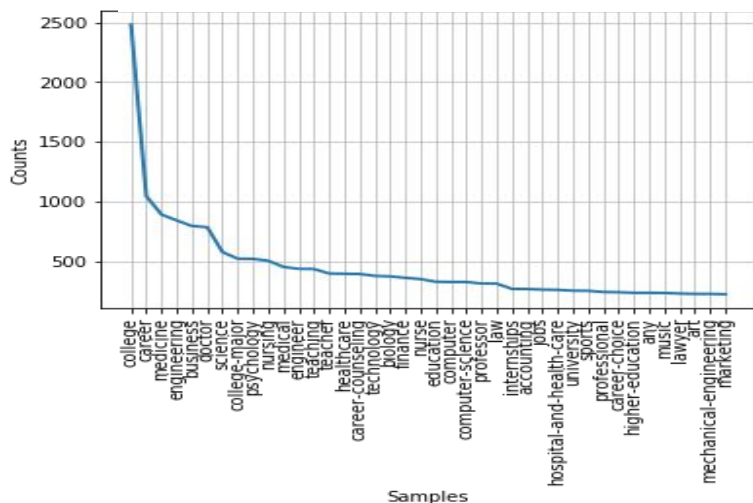
Solution:

- Create a list of topics with distinct lists of associated words
 - Agriculture: chicken, egg, farming, agriculture, manure, xeriscape
 - Utilities: electricity, energy, fiber, power, solar, utilities
- Compare topic words to words in comments using word embeddings, to create topic probabilities

TODO: Determine best ways to aggregate automatic labels and rule-based labels
Incorporate phrases instead of single words (?)

Data Augmentation

Label Frequency in Training Data



- Label frequency distribution shows strong imbalance in data
- Thesaurus-based data augmentation was performed which generates additional examples for infrequent labels by substituting synonyms of important keywords in example
- Solution: create additional example of useful labels, and allow classification model to ignore irrelevant labels with low frequency
 - #deathisapreferablealternative
 - FastText: -minCountLabel

- Take most confident comment labels and aggregate their probabilities to the agenda and session level

Session 1: zoning, urban planning

Session 2: roads, agriculture, budget

Session 3: housing, audience participation

Keep it short and simple.

Add details that might help professionals answer your question...

0 words • 0 tags

Use tags to match to the best professionals. (Ex: #technology, #medicine)

United States of America x [more](#)

System recommends labels as user types

Model trained on complete title + text

Problem: Unexpected results for short or incomplete entries

- Train with incomplete records and #incomplete label
- Engineer system to recognize incomplete entries

Spread the word, let's build
technical capacity all over the
world.

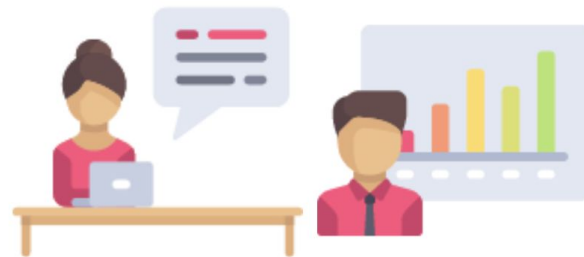
How to get involved with Delta teaching?



In the Bay Area? Apply to be a volunteer on the teaching team. Applications open later this year!



Contribute to our code base remotely:
bit.ly/social-good-ml



Join our slack community and become a beta tester to give feedback on our curriculum and field questions from remote students around the world.





OPEN MEDIA
FOUNDATION



CareerVillage.org



Analytics

Questions?



Appendix

We believe data is powerful, and anybody should be able to use it.

Delta Teaching Leads



Sara Hooker

Director of
Educational
Outreach



Amanda Su

Project
Management
& Vision



Dr. Brian Spiering

Coding Lead



Hannah Song

Curriculum
Lead



Our goal is simple:
empower students
with very little if any
exposure to machine
learning to leverage
data for good in their
communities.

We started this journey for two reasons.

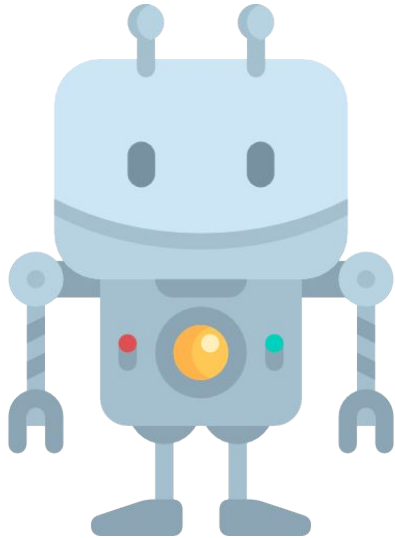
1. Machine learning is an incredibly powerful tool.



Like all powerful tools machine learning requires responsibility & accountability.

We believe the face of data science has to be more representative of the world it serves.

2. Delta has been working for the last 3 years to help non-profits around the world with their data.



Our non-profit grant recipient program is small and selective. We only work with 7-10 nonprofit grant recipients every year.

There is an incredible amount of unmet demand. We cannot help all the non-profits and communities that reach out to us for help.

What have we done so far?

In-person courses



Last year, we travelled to Nairobi, Kenya and taught a machine learning for good course.

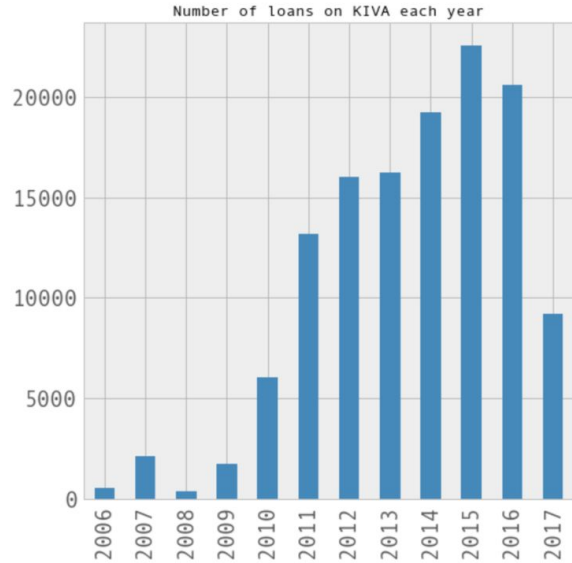
Graduation ceremony at Moringa School, Nairobi.

Many of our students travelled for more than an hour after work to attend class.



We taught a night class from 6:00 pm to 9:00pm 2x a week. We had work sessions every Saturday.

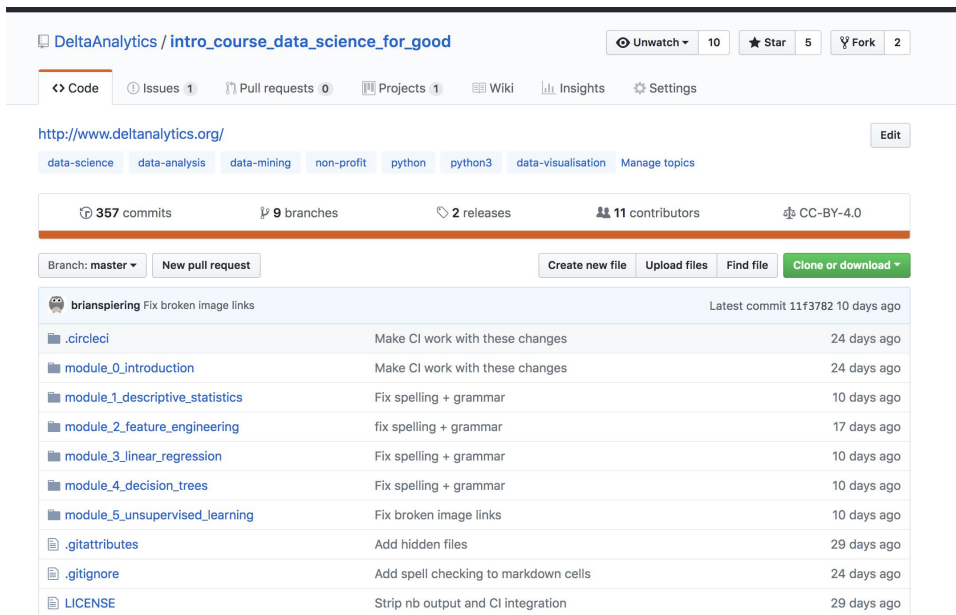
We emphasize teaching using local data to empower community insights.



In our pilot program in Kenya we used ~127,000 microfinance loans over 11 years.

Democratize code base and
curriculum content.

Our code is Publically Available and Open Source
(huge effort from our coding team).



DeltaAnalytics / [intro_course_data_science_for_good](#) Unwatch 10 ★ Star 5 Fork 2

Code Issues 1 Pull requests 0 Projects 1 Wiki Insights Settings

<http://www.deltanalytics.org/> Edit

data-science data-analysis data-mining non-profit python python3 data-visualisation Manage topics

357 commits 9 branches 2 releases 11 contributors CC-BY-4.0

Branch: master New pull request Create new file Upload files Find file Clone or download

brianspiering Fix broken image links Latest commit 11f3782 10 days ago

.circleci	Make CI work with these changes	24 days ago
module_0_introduction	Make CI work with these changes	24 days ago
module_1_descriptive_statistics	Fix spelling + grammar	10 days ago
module_2_feature_engineering	fix spelling + grammar	17 days ago
module_3_linear_regression	Fix spelling + grammar	10 days ago
module_4_decision_trees	Fix spelling + grammar	10 days ago
module_5_unsupervised_learning	Fix broken image links	10 days ago
.gitattributes	Add hidden files	29 days ago
.gitignore	Add spell checking to markdown cells	24 days ago
LICENSE	Strip nb output and CI integration	29 days ago

bit.ly/social-good-ml

Help us spread the
word!



All our curriculum is public. We welcome comments and have more than 300 remote teachers from all over the world.

You covered this today:

- ✓ What is machine learning?
- ✓ How do you define a research question?
- ✓ What are observations?
- ✓ What are features?
- ✓ What are outcome variables?
- ✓ Introduction to KIVA data



If we have observations over time, we need to do time series validation.



Ask yourself:

- Is the data for the correct time range?
- Are there unusual spikes in the data over time?

What should we do if there are unusual spikes in the data over time?



Link to all slides here: <http://www.deltanalytics.org/curriculum.html>



In the next few months we will teach classes in Morocco and in the local bay area in San Francisco.



Spread the word, let's build
technical capacity all over the
world.

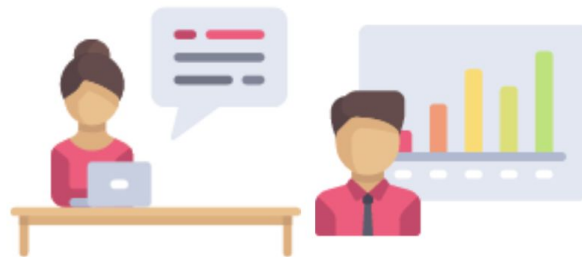
How to get involved with Delta teaching?



In the Bay Area? Apply to be a volunteer on the teaching team. Applications open later this year!



Contribute to our code base remotely:
bit.ly/social-good-ml



Join our slack community and become a beta tester to give feedback on our curriculum and field questions from remote students around the world.



Apply for a Grant



APPLY

2019 Grant Applications open through September 30th.

Apply here

<http://www.deltanalytics.org/2018-data-grant.html>

QUESTIONS?

Contact us at inquiry@deltanalytics.org

BACKGROUND

PROGRAMS

GET INVOLVED

High Level Steps

- Data cleaning
- Removing “Fluff”
- Unsupervised text clustering – LDA
- Rule-based label algorithm
- Aggregate labels to session level

```
In [8]: captions_data[(captions_data['session_id'] == 254)][['caption']]
```

```
Out[8]: 235      welcome everyone to the october twelfth city c...
1676      transactions and to consult with counsel conce...
4511      to state this general subject of the session a...
5395      session and i welcome the audience back into t...
12751     i think the people who are getting answer the ...
14499     you want me ask my question yeah it's like whe...
15926     us why okay oh i didn't pull it because i obje...
17103     a very important thing and it's also a lot of ...
18065     measure does and and and and what the money's ...
19274     about the project so and susan peggy from a we...
22035     approval on that i'm gonna let sue fahey who i...
23454     compelling good evening so and what we're requ...
25093     filter replacements we started that with the l...
26222     on either replacing shoring up or doing major ...
27554     basis we're anticipating in the current market...
29022     perspective with the savings we're anticipatin...
30168     and so so this does not include anything assoc...
31962     that we have set forth but these projects are ...
33123     system right right this is yeah birth quakes a...
34388     that doesn't have two sources of water all of ...
35364     days of water about with our depends on the se...
36724     going to see happen this is a little side note...
37890     sitting there and and and then restored that a...
39079     job nice nicely done so so the benefits are th...
40435     decrease in rates actually because of that and...
```

Donate

FUNDING OUR PROGRAMS

We are currently raising funds for our 2018 programs. If you are interested in supporting our Data for Good mission, please consider contributing.

Delta Analytics is a registered 501(c)3 non-profit organization. Your contribution is tax deductible.

Donate here
<https://www.paypal.com/us/fundraiser/charity/1392375>

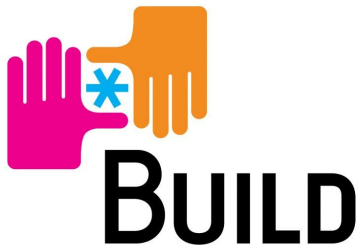


BACKGROUND

PROGRAMS

GET INVOLVED

Data Service Grant - BUILD



ANALYTICS

EDUCATION

BUILD is an Oakland, CA based education organization that provides an four year entrepreneurship program for at risk high school students to reduce the likelihood of dropping out, increase college acceptance, and improve career readiness.

Problem Statement

What factors, in particular BUILD program elements, determine student success?

Solution

Integrate BUILD's student demographic, college enrollment, and student participation across national programs to find factors which correlate with student college enrollment and persistence.

BACKGROUND

PROGRAMS

GET INVOLVED

Data Service Grant - BUILD

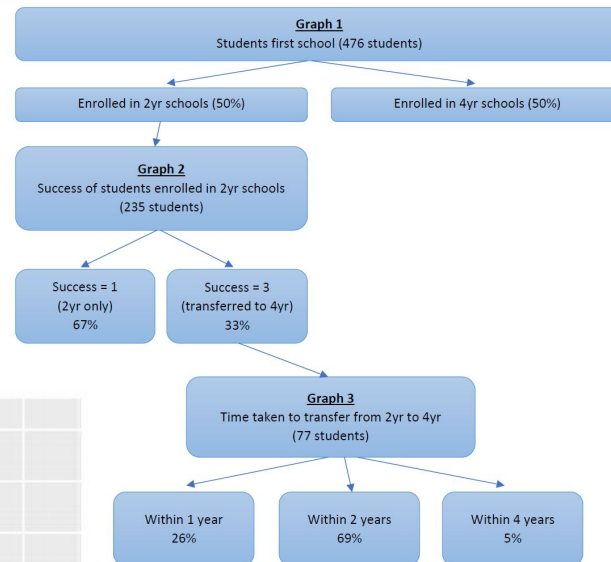
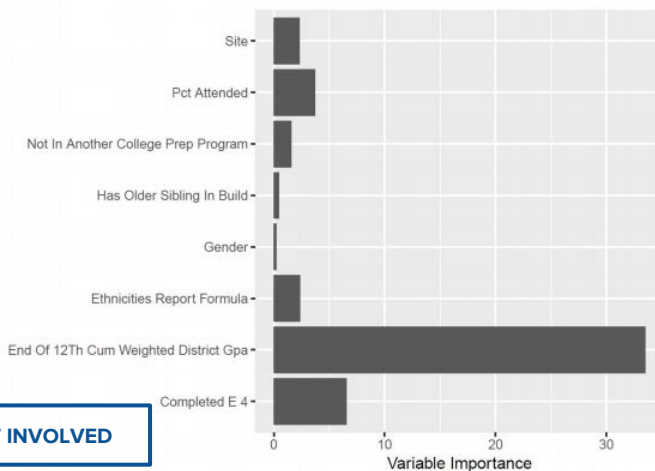


Deliverables

- Regression analyses
- Project documentation
- Report summarizing findings

ANALYTICS

EDUCATION



BACKGROUND

PROGRAMS

GET INVOLVED

Data Service Grant - Technoserve



ANALYTICS

ECONOMIC
DEVELOPMENT

TECHNOSERVE is an Washington DC based international development organization that works to lift communities out of poverty through developing the capacity of individuals, promoting connections among local businesses, and improving the business environment.

Problem Statement

How does the financial performance of Technoserve assisted business differ based on owner gender, size of business, and sector?

Solution

Develop a data cleaning methodology for financials collected across different international markets and a data pipeline into an analytics dashboard to summarize and automate reporting.

BACKGROUND

PROGRAMS

GET INVOLVED

Data Service Grant - Technoserve



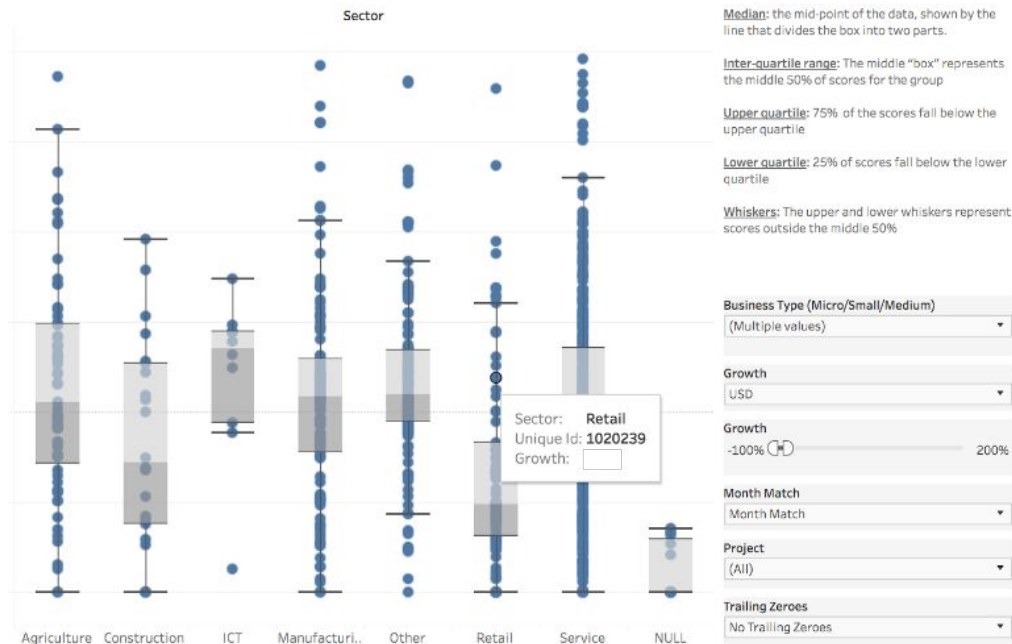
TECHNOSERVE

ANALYTICS

ECONOMIC
DEVELOPMENT

Deliverables

- Data cleaning and aggregation methodology
- Dashboards integrated with cleaned financial data
- Report summarizing findings



BACKGROUND

PROGRAMS

GET INVOLVED

Data Service Grant - Rainforest Connection



DATA SCIENCE

ENVIRONMENT

RAINFOREST CONNECTION is a San Francisco based environmental organization that seeks to leverage mobile technologies to monitor and protect remote forests by enabling real time interventions.

Problem Statement

How can Rainforest connection better use deep learning models to improve its accuracy in detecting and locating areas of the rainforest experiencing illegal logging?

Solution

Rewrite the software architecture for how RFCx builds and trains its models. Build models to estimate directionality of illicit activity.

BACKGROUND

PROGRAMS

GET INVOLVED

Data Service Grant - Rainforest Connection

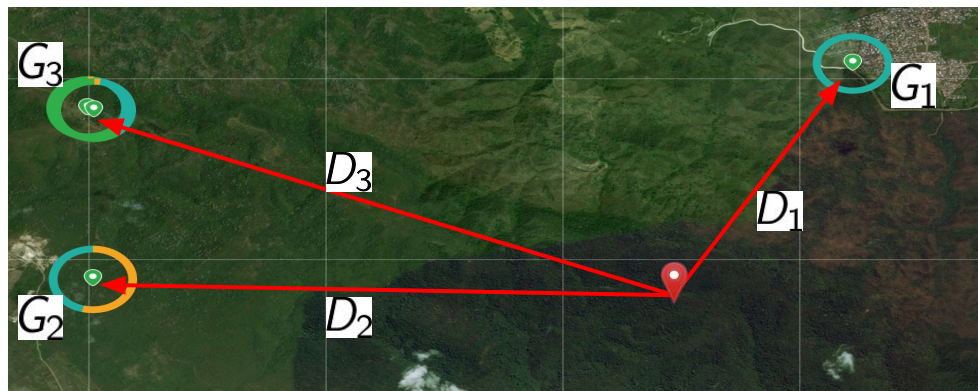
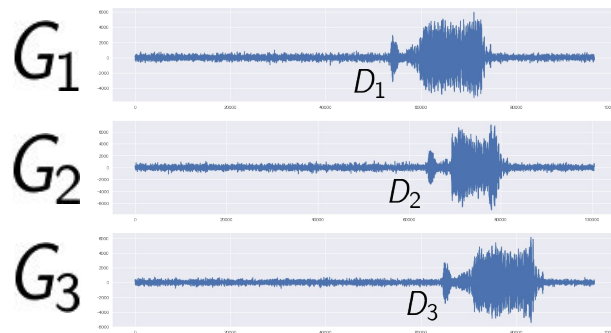


DATA SCIENCE

ENVIRONMENT

Deliverables

- Command line code base to streamline model training
- Methodology to train directionality models



BACKGROUND

PROGRAMS

GET INVOLVED